



53 Chelmsford Avenue

Romford, RM5 3UX

Asking Price £285,000



****CHAIN FREE**** This larger than average first floor maisonette with garden. Recently redecorated. Carpeted throughout, this property offers two double bedrooms, a modern fitted kitchen, family bathroom driveway parking, summer house, double glazed windows and gas central heating.

Located in a well established suburban area in close proximity to many local schools and shops and amenities. The area is served by a network of local buses with Gidea Park station just 1.9 miles away with a direct link into London

To arrange a viewing please call 01277 600 700 at your earliest convenience.



Living Room 15'7" x 10'9" (4.75 x 3.30)
Spacious lounge, cream walls and beige carpet, large double glazed window to front aspect, white wooden door leading to hallway.

Kitchen 11'0" x 9'9" (3.36 x 2.99)
Large kitchen painted cream with a selection of wall and base units in beach effect with black tiled splash-back,, black granite effect worktop, single bowl stainless steel with chrome mixer tap, electric oven, gas hob and extractor, space for washing machine, dishwasher and fridge freezer. Grey tiled floor. Double glazed window to rear aspect. White wooden door leading to hallway

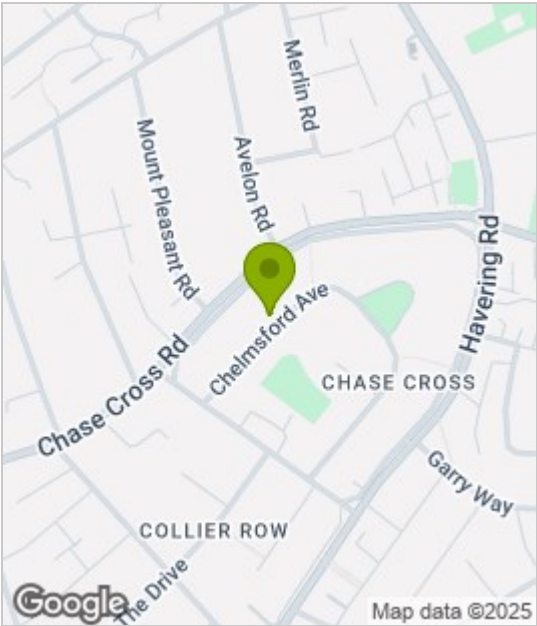
Bedroom 1 14'1" x 8'5" (4.3 x 2.59)
Cream Walls, grey waffle carpet, fitted wardrobes to 1 wall, radiator and white upvc double glazed window to front aspect.

Bedroom 2 10'9" x 9'9" (3.3 x 2.99)
Cream painted walls, grey waffle carpet, fitted wardrobe, white upvc double glazed window to rear aspect, radiator.

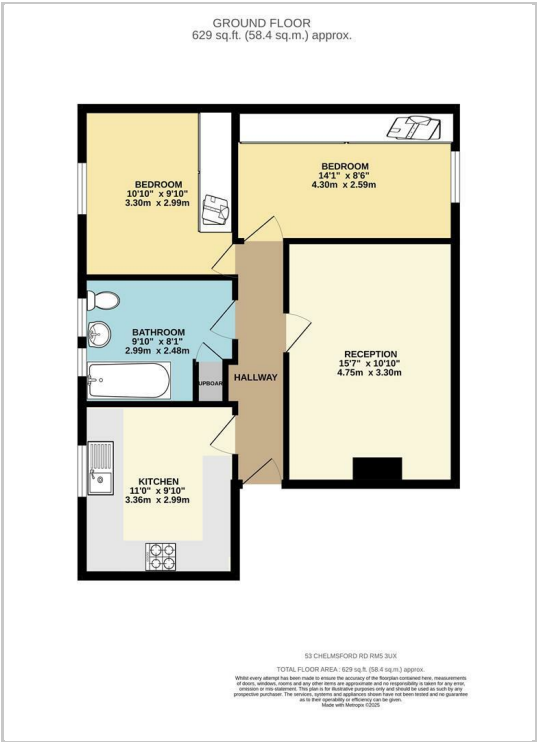
Bathroom 9'9" x 8'1" (2.99 x 2.48)
White Bathroom suite including vanity unit and shower over bath, with glass shower screen, fully tiled with wood effect vinyl flooring

Garden
Secure Garden, Partially laid to lawn with paving slab patio area. Large summer house/shed

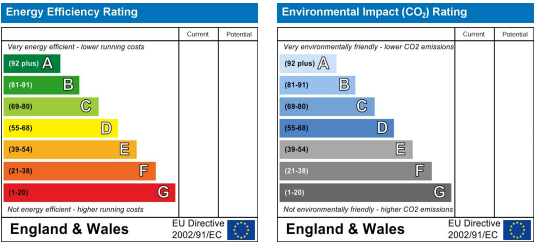
Area Map



Floor Plans



Energy Efficiency Graph



These particulars, whilst believed to be accurate are set out as a general outline only for guidance and do not constitute any part of an offer or contract. Intending purchasers should not rely on them as statements of representation of fact, but must satisfy themselves by inspection or otherwise as to their accuracy. No person in this firms employment has the authority to make or give any representation or warranty in respect of the property.